



# MailEnable

## High Performance Mail Server Software

### STANDARD EDITION

#### Main Features:

- **FREE** for personal and commercial use
- Unlimited users & domains
- Easy to install & configure
- Robust POP & SMTP Services
- Anti-spam
- List Server

**MailEnable Standard Edition** is high performance mail server software - ideal for users who need the power and stability of a high performance mail server, but require only basic email services such as POP, SMTP, standard spam protection and list-server. Other features include:

#### Mail Access Protocols

POP3  
SMTP

#### Anti-Spam

DNS Blacklisting  
Allow/block lists  
Powerful relay options

#### Administration

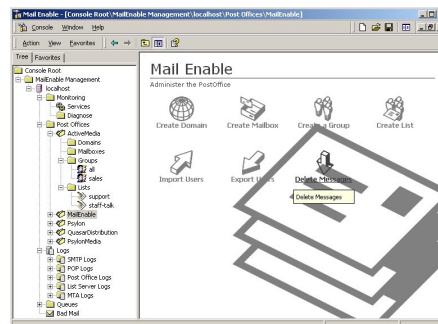
Import Windows users  
Customisable user export  
Set user quotas  
Autoresponders/autoforward mailboxes  
Binds to specific or all IP addresses

#### Platform Features

Integrated Windows Authentication  
W3C logging  
Extensive diagnostic reporting  
MMC Administration

#### List Server

Moderated/un-moderated lists  
Add Headers/Footers  
Subscribe/Unsubscribe  
Password Protected  
Activity Logging  
Configure List subject Prefix  
Configure List Reply To Address  
List confirmations



#### System Requirements

Windows 2003 Standard Edition, Web Edition or Enterprise Edition  
Windows 2000 Advanced Server, Server or Professional  
Windows XP Professional  
NT 4 Server\*  
128MB RAM, 100MB hard disk space  
Network interface card configured to use TCP/IP  
Dedicated Internet Connection



**MailEnable Pty. Ltd.**

486 Neerim Road  
Murrumbidgee VIC 3163  
Australia  
Phone: (613) 9569-0772  
Fax: (613) 9530-4066  
sales@mailenable.com  
www.mailenable.com

For more information, please visit our website at:  
[www.mailenable.com](http://www.mailenable.com)

\*NB: Some functionality not available with NT4.0